



**Windows & Mobile App**

**(Windows, iOS, Android)**

© 2021 Runwise Limited (UK). All rights reserved.

runwiseFX are trademarks of Runwise Limited (UK)

MetaTrader™ is a trademark of MetaQuotes, Inc.

All other trademarks are the property of their respective owners.

THIS DOCUMENT IS PROVIDED 'AS IS' WITHOUT ANY WARRANTY OF ANY KIND, EITHER EXPRESS OR IMPLIED, INCLUDING BUT NOT LIMITED TO, IMPLIED WARRANTIES OF MERCHANTABILITY, FITNESS FOR A PARTICULAR PURPOSE, OR NON-INFRINGEMENT.

THIS DOCUMENT MAY CONTAIN TYPOGRAPHIC ERRORS AND/OR TECHNICAL INACCURACIES. UPDATES MAY BE MADE TO THIS DOCUMENT AND/OR ASSOCIATED SOFTWARE AT ANY TIME.

# TABLE OF CONTENTS

<b>1</b>	<b>INTRODUCTION.....</b>	<b>1</b>
1.1	Document Conventions .....	1
<b>2</b>	<b>Installation .....</b>	<b>2</b>
<b>3</b>	<b>Setting-Up for Mobile Access.....</b>	<b>3</b>
<b>4</b>	<b>EA Connection to The App .....</b>	<b>4</b>
<b>5</b>	<b>Main App Tabs.....</b>	<b>5</b>
<b>6</b>	<b>Main Toolbar .....</b>	<b>6</b>
<b>7</b>	<b>Tabs In Detail.....</b>	<b>7</b>
7.1	Accounts.....	7
7.2	EAs.....	8
7.3	Alerts.....	9
7.4	Trades .....	10
7.5	Chart .....	11
7.6	News .....	12
7.7	Mobile .....	12
7.8	Trading View.....	12
7.9	Signals .....	13
<b>8</b>	<b>Main Menu of Windows App.....</b>	<b>23</b>
8.1	File.....	23
8.1.1	Open Data Folder.....	23
8.1.2	Save Desktop.....	23
8.1.3	Exit.....	23
8.2	View.....	23
8.2.1	TradingView Create .....	23
8.2.2	Currency Map Create .....	23
8.2.3	Currency Strength Create .....	23
8.3	Config .....	23
8.3.1	Say Alert Verbally.....	23
8.3.2	Options .....	23
8.3.3	EA Configuration .....	24
8.4	Tools .....	24
8.4.1	Test.....	24
8.4.2	String/Number Combination Wizard .....	24
<b>9</b>	<b>CONTACTS .....</b>	<b>25</b>



# 1 INTRODUCTION

This document covers our companion app for our EAs that allows them to be controlled centrally from Windows on desk and Apple iPhone (iOS) and Android on mobile.

The Windows app also acts a secure and efficient communications gateway to the mobile version of the app, so must be set up first.

## 1.1 Document Conventions

The following icons are used to throughout the document:



Take note – try to remember



Very import to take note of and remember - could cause undesirable results if ignored



Top tip – shortcut or other useful information that can make the system easier to use



Advanced feature/subject – can skip over when you are first learning how to use the system



Technical ‘behind the scenes’ detail that you don’t strictly need to know but maybe interested in

## 2 Installation

The Windows app is available from the following link:

<https://www.runwisefx.com/csa/setup.exe>

Follow the usual Window app set-up procedure. Install on same machine as your MetaTrader. So, if have VPS then install Windows app on VPS. See section 4 if have multiple machines running MetaTrader, where it talks about EA input Comms\_GUI\_Machine.

iOS app on Apple Store: <https://apps.apple.com/bn/app/runwisefx/id1550501513>

Android app on Google Play:

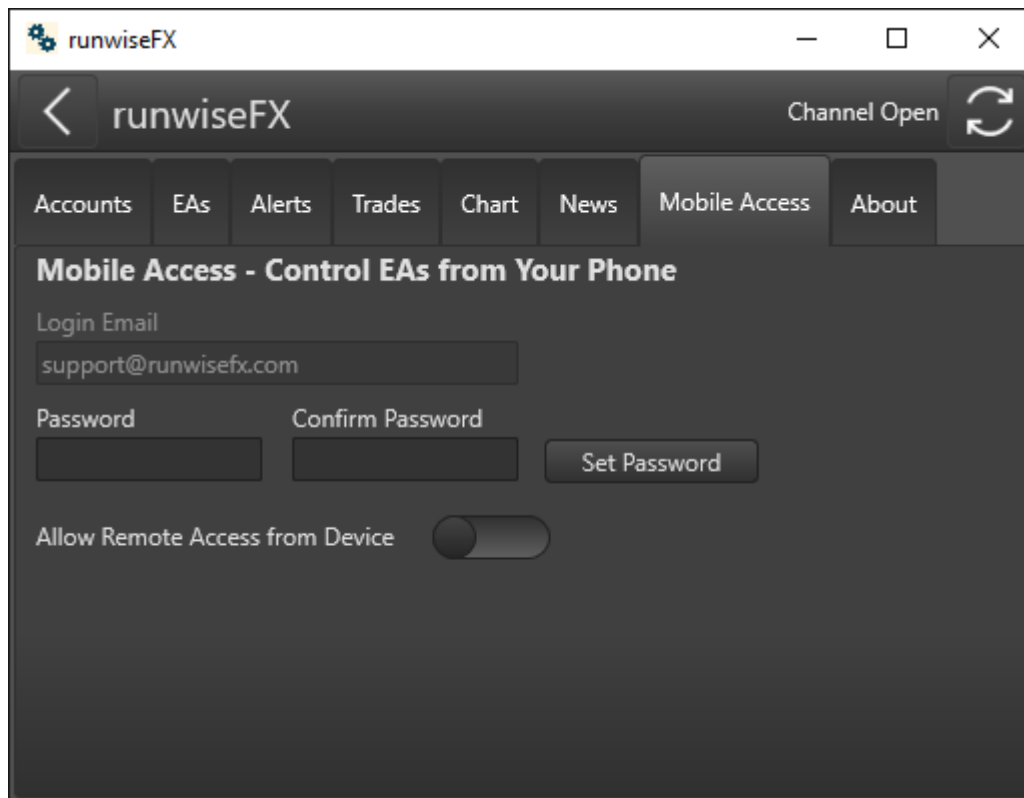
<https://play.google.com/store/apps/details?id=com.embarcadero.runwiseFX>

Note, the Windows app is a direct download from our website and is digitally signed by us – publisher: Runwise Ltd

On the Windows app follow the activation dialog, which is shown at first start-up. Enter your name and email where you activation code will be sent to. Then enter this code in the same dialog, lower part, as directed.

### 3 Setting-Up for Mobile Access

On the Windows version of the app, go to the Mobile Access tab and enter a password for mobile access. This will be the password you need to enter on the mobile version of the app, along with your email address, as shown. Then re-type the password in the confirm password box and the click Set Password button. This will activate access by the mobile. You can use the 'Allow Remote Access from Device' switch to turn mobile access on/off at any time.



When logging in on mobile make sure the case of the letters for email matches what is in this mobile access tab. Same on password too. We'll make the case on the email less sensitive in the next release.

## 4 EA Connection to The App

Our EAs will automatically connect to the Windows RunwiseFX app when it is running. The app supports multiple instances of MetaTrader / accounts connecting to it. If any MetaTraders/EAs are located on different machine on your network then you can use EA input **Comms\_GUI\_Machine** to specify the name of the machine that has the Windows RunwiseFX app running on it.



## 5 Main App Tabs

Depending on the size and orientation of your device the main menu will be presented either as a row of tabs or as a series of buttons. You can use the 'hamburger' button on the toolbar to go to this tab menu at any time.

The menu items are as follows: -

**Accounts:** Lists the accounts that have connected to the EA. Can click on account to equity targets.

**EAs:** Lists the EAs that have connected to the app. Click/touch item to see details for EA.

**Alerts:** List of alerts that have happened since the Windows app was started. Can click/touch on the alert to see EA details related to the alert, if appropriate.

**Trades:** List of trades both closed and open. For open trades can click/touch trade to see EA details related to the trade.

**Chart:** Allows charts to be view from the desktop version of MetaTrader, exactly as they appear, including custom indicators and chart objects.

**News:** Lists news events

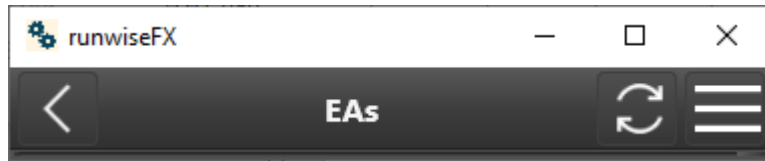
**Mobile:** Shown on Windows app and allows mobile access to be setup & controlled

**TV:** Shown on Windows app and allows Trading View charts to be shown and traded via MetaTrader with our trade panel superimposed on top of the TradingView chart.

**Signals:** Shown on Windows app and allows signals to be configured, e.g. opening trade due to received email from MetaTrader indicator or alert from TradingView

**About:** Shows version and connection status, plus log messages.

## 6 Main Toolbar



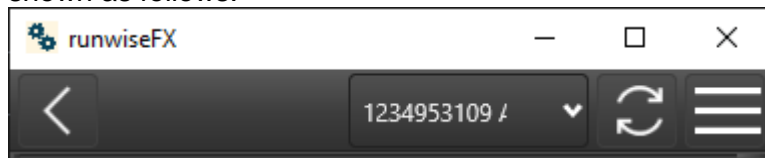
The main tool bar shows a back button, refresh and for smaller devices a 'hamburger' menu access button. Note, for Android users, the back button isn't shown, instead you should use the system back button at the bottom of your device screen.

The back button allows you go back to the previous screen. It's also useful when entering a new value, e.g. take profit price, and have changed your mind about altering the value as you start to type. In this case, the back button will cancel your edit.

The refresh button will refresh the current contents of the screen, although generally shouldn't be necessary as the screen will auto update. It's of most use when viewing charts as that refresh is manual.

The 'hamburger' menu button allows you to toggle between the main menu and the screen last on. Note, this button isn't displayed if your device is large enough to display the tab menu.

If more than one account is connected then an account selection drop-down will be shown as follows:

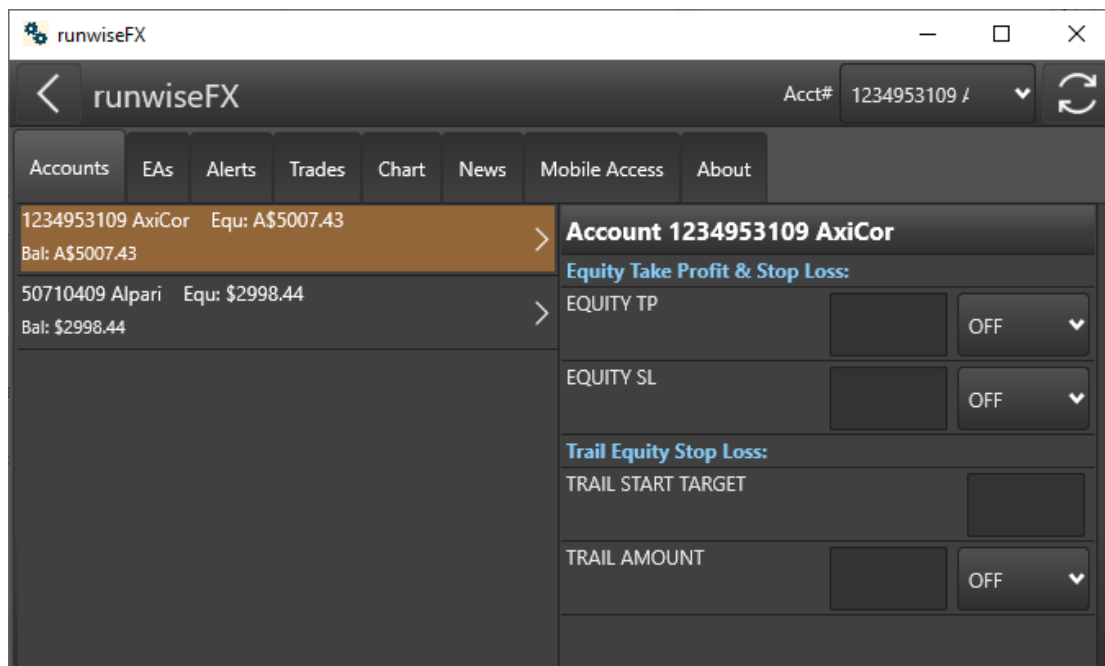


This allows you to select the account to show/use when accessing the EAs, trades and charts menu options.

Finally, if your device is large enough then the connection status of the mobile link will be shown. The connection status is more likely to be shown if there is a problem, e.g. you are using the app on your mobile but the desktop Windows app isn't running or it's lost connection to the Internet. In this case you will see 'No Desktop' in orange.

# 7 Tabs In Detail

## 7.1 Accounts



Lists the accounts of the EAs that are currently connected, showing current equity and balance. Click on item to edit account targets:

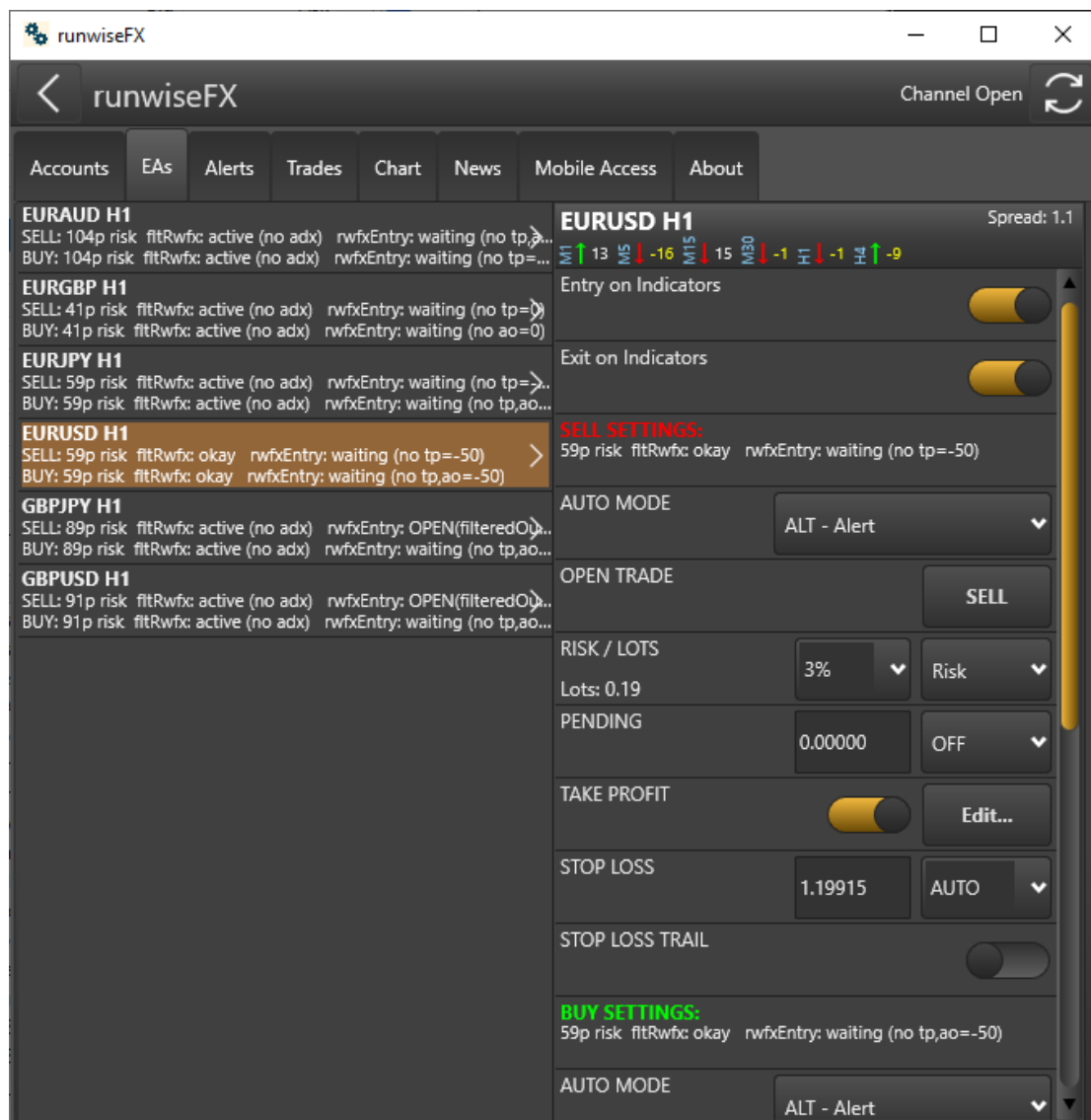
**Equity TP:** This is the amount at which if equity reaches will cause the specified action from the drop-down. This action can include suspending trading, closing all trades, or both.

**Equity SL:** Similar to Equity TP but will take action if equity goes down to this amount

**Trail Start Target:** It target equity amount when trailing will start when reached.

**Trail Amount:** Amount to trail by and action to take if hit. The selected action will happen when equity reduces by supplied trail amount from its peak.

## 7.2 EAs



Allows EA status to view and EA to be modified when selected.

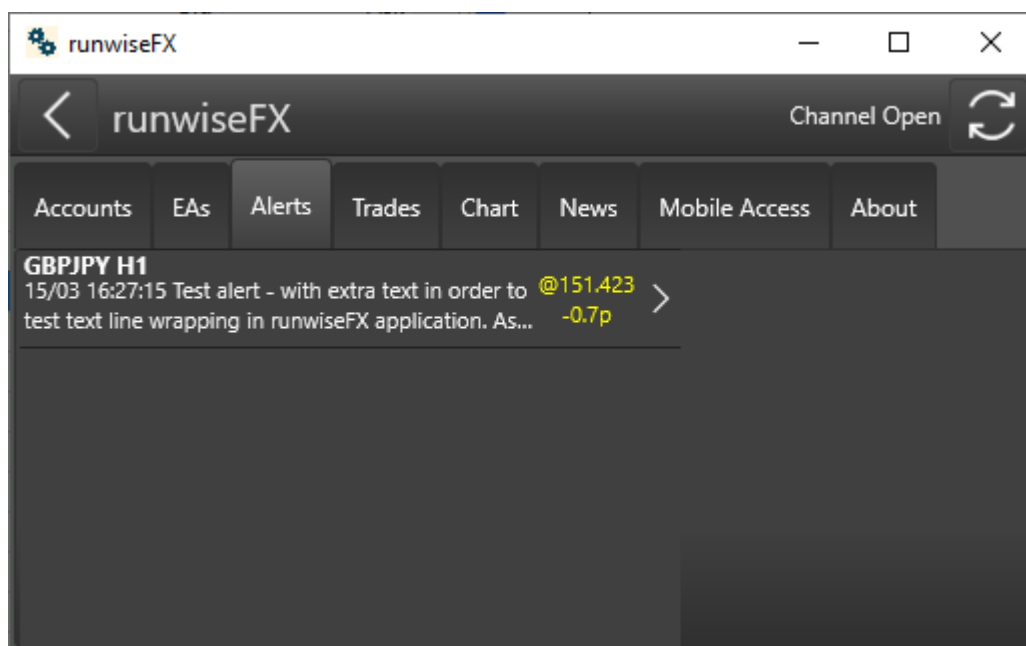
The items that can be edited are similar to what is found on the EA panel. Note, the rule GUI controls are shown first. If you download any rules from our library that have such controls then these will be shown too. The settings for sell and buy are then show.

Auto Mode is really useful for turning tradin on/off.

Take Profit can be adjust by usign the Edit... button, which has a master take profit on/off next to it. The Edit button will show the take profit targets, where you adjust the target either in pips, risk reward ratio (rrr) or specific price. You can also set what happens when that target is reached.

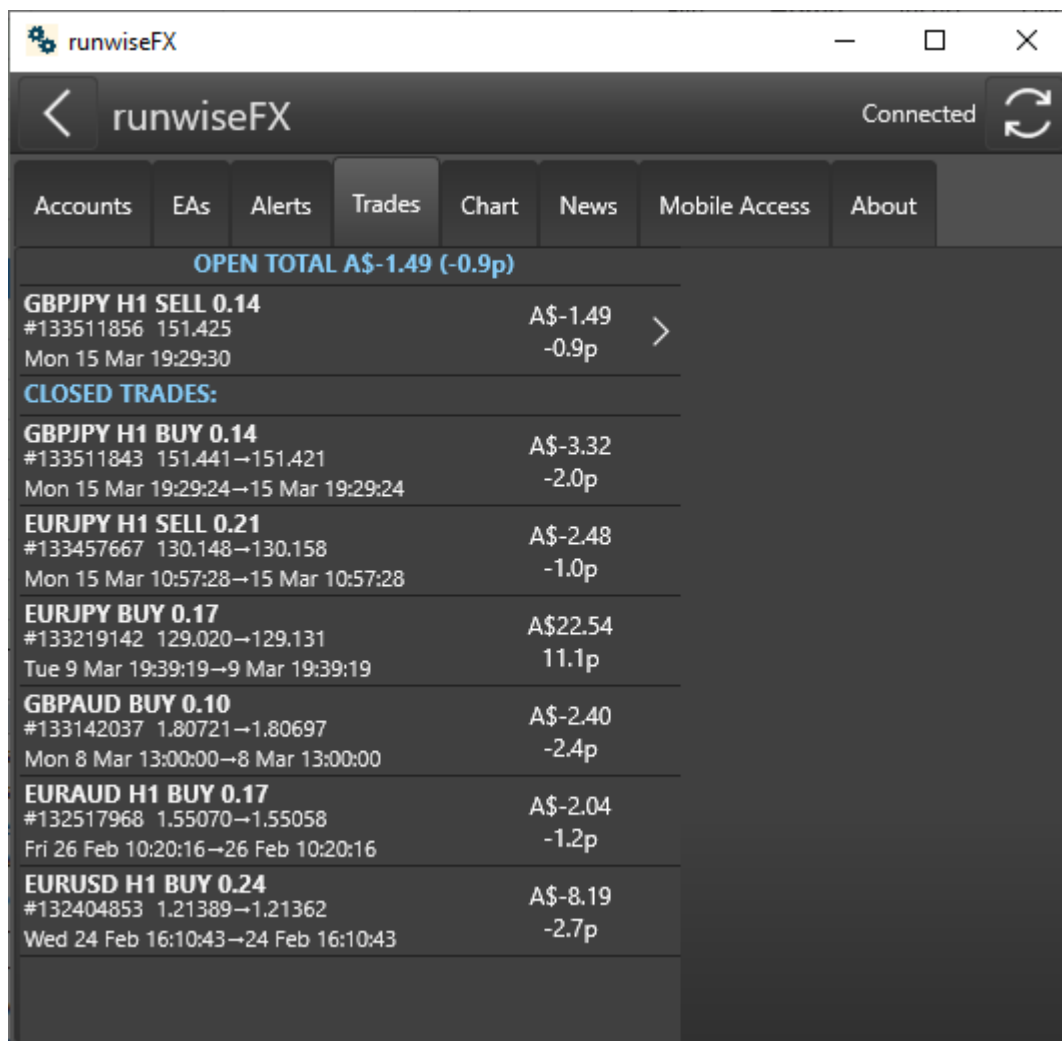
Use the back button to go back.

## 7.3 Alerts



Lists the alerts that have happened since the Windows app was started. The price that the alert happened is also shown, plus pips moved since the alert. If the alert relates to a particular EA then can click the alert to go straight to the setting for the EA and the associated direction (buy/sell) that the alert related to.

## 7.4 Trades



The screenshot shows the 'runwiseFX' application window with the 'Trades' tab selected. The interface includes a top navigation bar with tabs for Accounts, EAs, Alerts, Trades, Chart, News, Mobile Access, and About. The 'Trades' tab displays a list of trades, categorized into 'OPEN TOTAL' and 'CLOSED TRADES'. Each trade entry includes the instrument, trade type, lot size, entry price, exit price, and the resulting profit or loss in both amount and pips. An arrow icon next to the open trade indicates a link to view EA controls.

OPEN TOTAL A\$-1.49 (-0.9p)			
<b>GBPJPY H1 SELL 0.14</b>	#133511856 151.425	A\$-1.49	>
Mon 15 Mar 19:29:30		-0.9p	
CLOSED TRADES:			
<b>GBPJPY H1 BUY 0.14</b>	#133511843 151.441→151.421	A\$-3.32	
Mon 15 Mar 19:29:24→15 Mar 19:29:24		-2.0p	
<b>EURJPY H1 SELL 0.21</b>	#133457667 130.148→130.158	A\$-2.48	
Mon 15 Mar 10:57:28→15 Mar 10:57:28		-1.0p	
<b>EURJPY BUY 0.17</b>	#133219142 129.020→129.131	A\$22.54	
Tue 9 Mar 19:39:19→9 Mar 19:39:19		11.1p	
<b>GBPAUD BUY 0.10</b>	#133142037 1.80721→1.80697	A\$-2.40	
Mon 8 Mar 13:00:00→8 Mar 13:00:00		-2.4p	
<b>EURAUD H1 BUY 0.17</b>	#132517968 1.55070→1.55058	A\$-2.04	
Fri 26 Feb 10:20:16→26 Feb 10:20:16		-1.2p	
<b>EURUSD H1 BUY 0.24</b>	#132404853 1.21389→1.21362	A\$-8.19	
Wed 24 Feb 16:10:43→24 Feb 16:10:43		-2.7p	

List the trades both open and closed. Show the profit both in amount and pips. For open trades can click trade to see EA controls that relate to the trade.

The open total both in amount and pips is also shown at the top.

## 7.5 Chart



Shows chart from MetaTrader desktop as setup on your desktop version of MetaTrader, complete with any custom indicators, etc. A drop-down selection list is provided so you can select which EA you would like to see a chart for. Left/Right and Zoom In/Out button are also provided. On mobile you can pinch & zoom the chart. On Windows the zoom can be controls via mouse wheel.

Note, use the Refresh button on the main tool bar to refresh the chart.



There is currently an issue with our iOS version where icons aren't displayed on the buttons on the chart toolbar. The buttons still work, so just cosmetic. Will fix in next release.

## 7.6 News

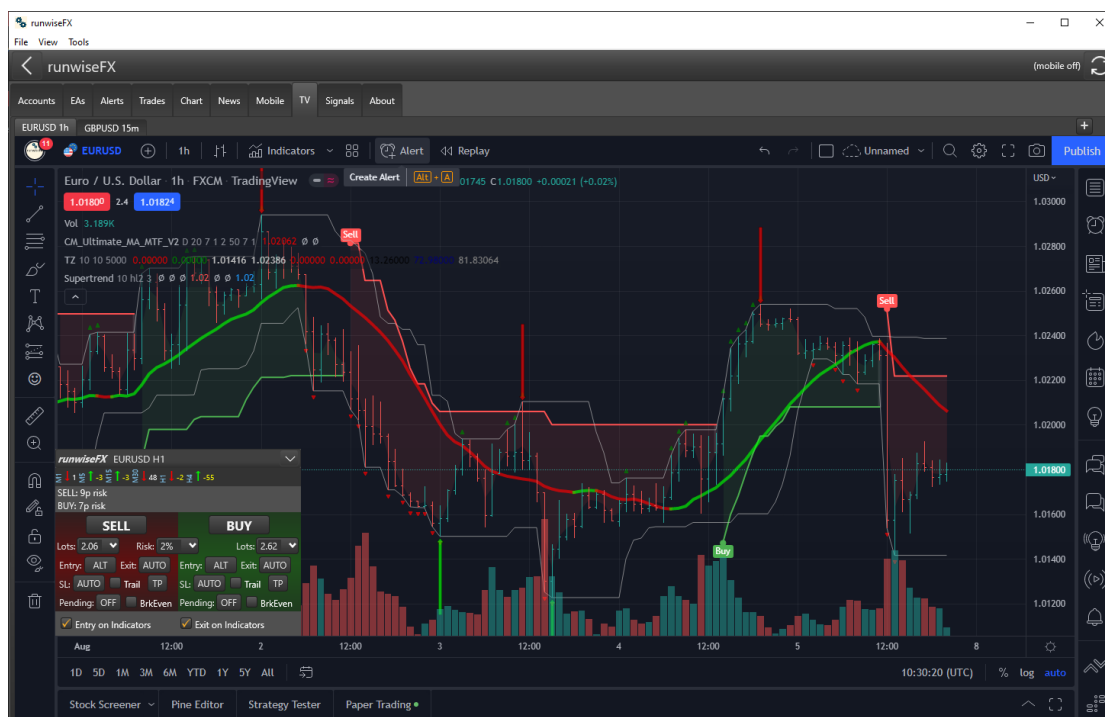
Lists news events if EA on chart is configured to show them.

## 7.7 Mobile

Only shown on Window app and allows control from your mobile to be setup. See section 3.

## 7.8 Trading View

Only visible on Windows app and is currently in Beta. No support is offered.



Shows TradingView chart with our trade panel superimposed on top. Will send trades to appropriate EA on MetaTrader and allow you to trade TradingView via MetaTrader. MetaTrader provides partial closes and auto stop loss, etc., that isn't available in Trading View, plus huge broker choice.

Use the + button on the chart taps to open extra tabs. You can also open a totally new TradingView window via View | TradingView Create menu option. This is very useful if you have a multi monitor setup. Tip: Use File | Save Desktop to save your desktop layout for next time.



## 7.9 Signals

Only shown on Windows app and allows signals to be configured that the app should look out for and automatically action. This can be alerts from indicators, both MetaTrader and TradingView, or alerts from Telegram channels you are subscribed to. We even support trades appearing on an account to be regarded as a signal that can then be sent to other accounts, e.g. trade copy facility.

Signals can automatically open trades and close an opposite direction trade. The alerts will need to contain the symbol to be traded and also some indication of direction, e.g. long/short, up/down, buy/sell, bear/bull, etc. The system will automatically parse this from the alert text. Also, our MetaTrader RunwiseFX EA needs to be connected to the Windows app for symbol to be traded, i.e. symbol appears in the EAs tab of Windows app, i.e. execution of the signal will be on MetaTrader.

Use Signal Sources tab to configure signals to watch for. To setup a signal then do the following:

- Click New... button and enter reference ID, can be anything but best to keep in short and no spaces. Used for logging purposes and so can refer to it later.
- Use Signal Source drop-down to select signal source, i.e. where alerts are coming from. There are more details on each type in sub sections below (see section 7.9.2 through to 7.9.7).

- **Text Required in Signal:** If there is any text in the email alert you wish to check for then can add to 'Text Required in Signal' box. This is useful if want to setup more than one signal that have differences in the alert text, e.g. come from different indicators. Or if signal is being used to exit trades then may wish to set this to the text that needs to be in alert to indicate exit. Note, if need to check multiple items are in the alert text then can comma separate them.
- **Text to Exclude:** If there is any text to exclude, i.e. cause the signal to be ignored then can set in the 'Text to Exclude' box. This prevents the signal from being actioned if this text is found in the alert text. A good example of this if get exit alerts but don't want them to get picked for entry, so you would include the text that indicates just for exit and should be ignored. Note, if need to check multiple items aren't in the alert text then can comma separate them.
- **Other Signals Required:** Can be used to specify other configured signals (other Reference IDs you've added) that must of already signalled in the same direction to allow action to be taken when this signal happens. This is useful for checking multiple indicators (signal sources) are in agreement before trade happens.

★★★★★  
**top  
tip**

The 'Directions' sub-tab allows you to see the received signal directions for the various Reference IDs and symbols.

- **Advanced >> button:** Provides additional controls to set SL, TP and/or pending order entry prices from alert text . See section 7.9.1 for more details.
- **Action To Take Signal:** Select what to do up on matched signal, e.g. should trade opened and if should close trade in opposite direction, if open. Or you can also select to send signal to rule running on EA, i.e. to do more complex/bespoke handing on the EA.

It's also possible to select 'CS - Close Same Direction (i.e. exit signal)' this will allow you handle exit signals that are just for closing trades. Create a new Reference ID and set to this option. Also set 'Text Required in Signal' to what it needs to look for to know close signal, e.g. includes the word CLOSE.

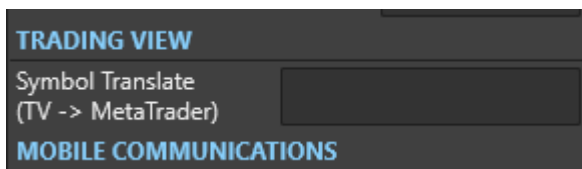
**IMPORTANT:** If you are using the same signal source for entry then for entry Reference ID you may need to set 'Text to Exclude' to CLOSE (say), so close signal doesn't trigger an entry.

- **Trade Index #:** Can be used if the EA is in multi-trade mode and if set will use the supplied trade index on the EA for managing the signal. Trade indexes are numbered 0 up to the value in 'Max Simultaneous Trades' box in CONFIG | General Settings on the EA. Note, a reason you might like to set a particular trade index is that trade indexes can be configured differently, e.g. different stop loss. If blank then will just next free trade index.
- **Max Trades:** Maximum number of trades the signal can open in the same direction. Note, Max Simultaneous Trades' box in CONFIG | General Settings on the EA needs to be at least this Max Trades value -1. If blank then will just use next free trade index if there is one, else ignore the signal if none free.

- **Trade Comment:** Can be used to set the trade comment that will be shown in MetaTrader in the list of open trades. If blank then will use the default configured in the EA. Note, only works for market orders not pending orders.
- **Allowed Accounts:** Set the accounts that the signal is allowed to be executed on. Can tick <<ALL>> and will send to any account, regardless if ticked or not. Note, list of accounts is based on what is connected to the App. Can click Refresh to update the list if just connected with a new account.
- Finally click **Save**

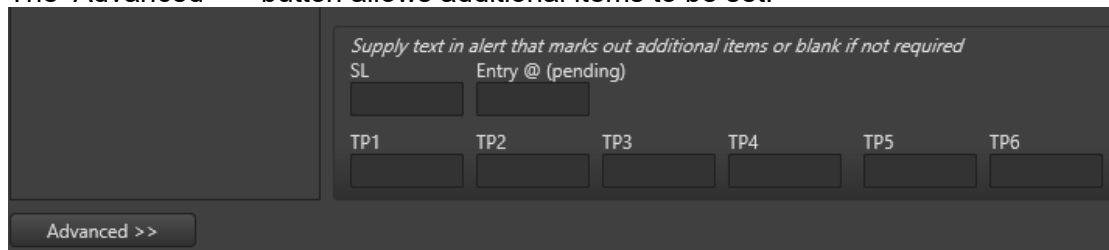
The Log tab in the Signal tab can be used to see what signals have been received and what action was taken.

Note, if the symbol in TradingView, or other external signal source, is different to what symbol your MetaTrader broker uses and the EA is running on then can set 'Symbol Translate' option in Config | Options pop-up of our Windows app to translate to EA symbol. See section 8.3.2



## 7.9.1 Advanced Button

The 'Advanced >>' button allows additional items to be set.

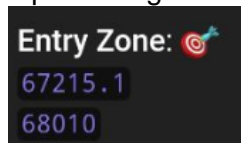


This allows you to parse stop loss, entry price and/or take profits from the alert/signal text. Simply enter the text that appears before the item in the alert text. For example, if the alert text contains 'SL: 1.5678' then set the SL box to **SL:** (no need to worry about the space – it just intelligently parses the number after the text you supply). ‘

Note, if 'Entry @' box is blank then will open market order, else pending order. Will automatically set limit/stop type depending where entry price is in relation to current price. If pending order already setup then will update to new price. Note, if there is no text before entry price, i.e. just appears as a price after symbol/direction then can set 'Entry @' to \*.

### ★★★★★ top tip

If the signal provides two prices for entry, i.e. a zone, then can tell the system how close to which price you wish to set the pending order for, in percentage terms. Example:



If set Entry@ box to **Zone:\*50** then the system will set pending halfway (50%) between 67215 and 68010, i.e. 100% means set to 2<sup>nd</sup> price and 0% is first price. Don't include % sign though. So, Entry@ box is set to the text to look for and then percentage, separated by \*. Note, if entry zone is straight after symbol & direction then can put **\*\*50** as per example. Note, if 2<sup>nd</sup> price not found then will treat as single entry price.

Note, for TPs, you still need to have configured that number of TPs in CONFIG | Take Profit on the EA. The signal will just set the TP price(s) to what is in the alert text if TP $n$  boxes are populated. Set 'action on hit' on the EA to say what to do when TP target is reached, e.g. set Exit %.

Note, if TPs are just supplied one after the other then can use \* for subsequent TPs. For example, if signal contains:



Then Set TP1 box to **(TPs):** to indicate the start of where

the TPs are supplied and set TP2 to TP6 boxes to \* i.e.:

TP1	TP2	TP3	TP4	TP5	TP6
(TPs):	*	*	*	*	*

### 7.9.2 Signal Source: Account Trade Copy

Allows new trades seen on a 'source account' to be treated as signals that can then go to other accounts via 'Action to Take On Signal'. This provides a trade copy facility from one account to one or more other accounts. Note, a Source Account selection box will appear next to Signal Source for you to select the master, i.e. source, account that will be monitored for new trades.

You must have EAs connected from the various accounts in order to be both monitored and available for selection. Note, for the source account it is not necessary to have a chart open for each symbol, as the EA will report all new trades seen on the account.

The signal text will include SL, TP, magic number and trade comment, so can include these in boxes like 'Text Required' and 'Advanced >>' settings for SL & TP.

Format of signal text from source account is:

<BUY|SELL> SL:<slPrice> TP:<tpPrice> MAGIC:<magicNum> <tradeComment>

### 7.9.3 Signal Source: MetaTrader Email Alerts

This is for MetaTrader indicators that offer sending alerts to Email. Note, whilst this sounds slow it is actually very fast and recommended. MetaTrader will send email but is all local on your computer, so is effectively just a instant message.

See Appendix A on how to configure MetaTrader to send emails local to another program running on your computer, such as our Windows app.

★★★★★

**top  
tip**

You can test the email alert on the EA via CONFIG | Tools | 'Test Email Signal' button. This will send an email just like an indicator would and uses the text in box to the left of this button. You'll see the raw emails appear in the About tab in our Windows app.

### 7.9.4 Signal Source: MetaTrader Pop-up Alerts

Will monitor the alert pop-up of MetaTrader and will action found alerts. As mentioned earlier, the alert text will need to contain symbol and direction details.

Note, the system assumes your MetaTrader alert pop-up has the window title of 'Alert'. If you've installed MetaTrader for a different language then this may not be the case. You can set the window title that appears in Config main menu | Options... | SIGNALS | MT Alert Pop-up Title entry.

### 7.9.5 Signal Source: Telegram

Will automate trade signals from one or more telegram channels that you subscribe too.

First, you must set your mobile phone number in Config main menu | Options... | TELEGRAM section and do so in the international format, e.g.:

If you have Two-Step Verification enabled on your Telegram account then you will need to set this password in the 2Factor Password box. Note, you can tell if Two-Step Verification is in use via Privacy & Security settings on your Telegram app. You can also limit logging of messages to Telegram channels you have selected to be monitored when configuring Signals.

Finally, make sure 'Activate Telegram Link' switch is turned on and click Save.

This will cause our Windows app to connect to Telegram and you'll receive a message on Telegram on your phone with a code. Our app will ask for this code, which will then permit connection to Telegram. When connection is successfully established, you'll see the following in the 'Status & Test' sub-tab of the Signals tab, where it reports Telegram Authorization and Connection Status:

Note, you only need to supply this code once, unless a change is made to your Telegram account.



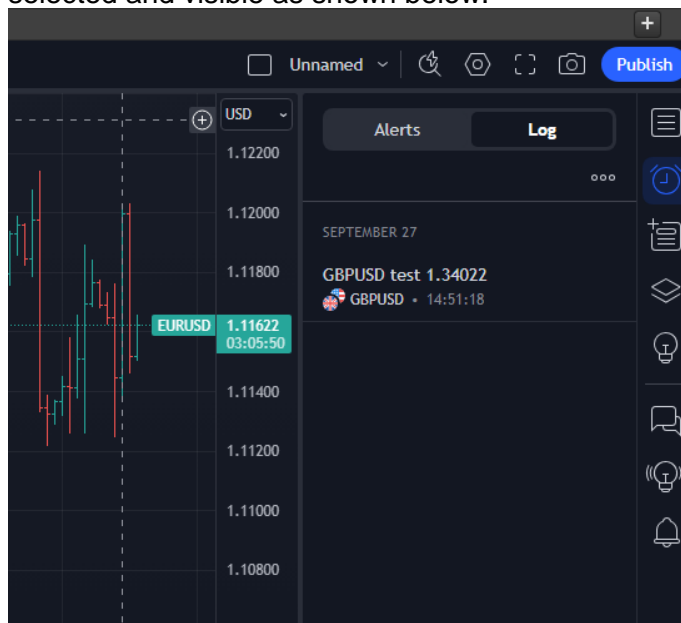
If you don't receive the code then check the About tab of the Windows app and look for any errors related to Telegram. If you see a 'TELEGRAM.EXCEPTION: The specified module could not be found' then you may need to install the Microsoft C++ Redistributable from: <https://learn.microsoft.com/en-us/cpp/windows/latest-supported-vc-redist> Try installing X64 version first and if that doesn't work the X86 version. Will need to restart PC/VPS when install Redistributable.

You can now create a signal Reference ID for Signal Source of Telegram, where you'll see box appear where you can select which Telegram channels to monitor. You can select <<ALL>> for all channels you are subscribed to:

Note, the number in square brackets is the Telegram channel ID which you may see appear in log messages. You can use the Refresh button to update the list of channels you are subscribed to. Use this button if you have just subscribed to a new channel since you started our app. However, if you've ticked <<ALL>> then will monitor all your subscribed channels anyway.

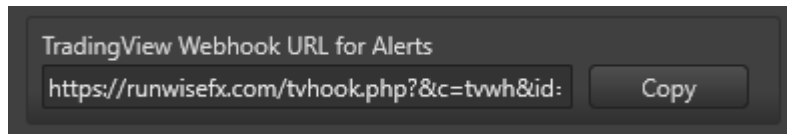
### 7.9.6 Signal Source: TradingView Pop-up Alerts

Will action pop-up alerts shown in the Alerts section of your TradingView chart, which in turn is shown in our Windows application (TV tab). You must have Log tab selected and visible as shown below:

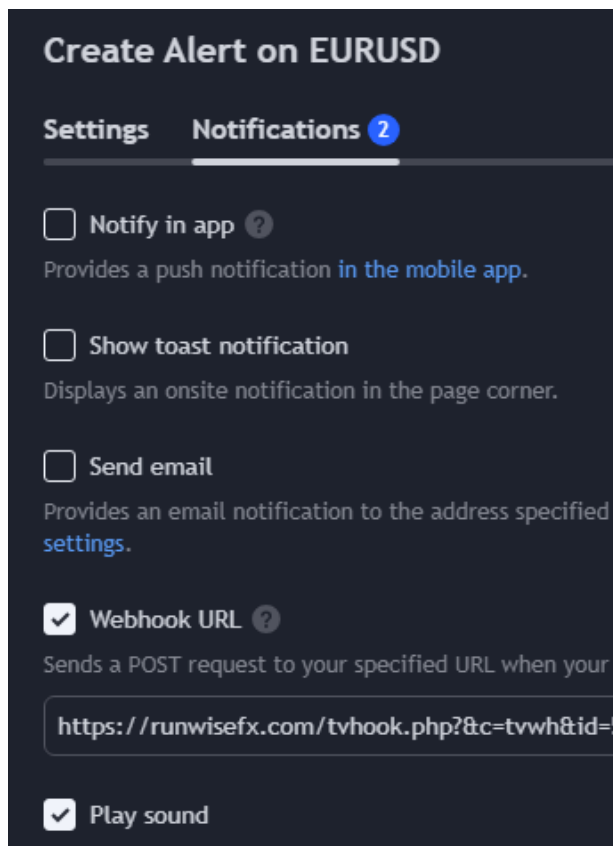


### 7.9.7 Signal Source: TradingView WebHook Alerts

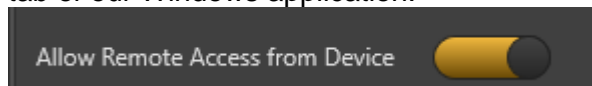
This is where you set your TradingView to use a WebHook to send the alert to our Windows app running on your PC, via our server. The required WebHook ULR will be shown in a panel as follows:



Use the Copy button to copy the Webhook URL to the Clipboard so can be pasted into Webhook URL shown in the Notifications tab of the Alert settings in your TradingView:



Note, you must also have 'Allow Remote Access from Device' set to on in the Mobile tab of our Windows application:



You don't need to have TradingView chart open in our Windows app for this signal type, but still need our MetaTrader RunwiseFX EA connected for the symbol to be traded and of course have our Windows app running on your PC.



## 7.9.8 Fault Finding with Signals

The Log sub-tab can be very useful for determining what went wrong if a signal didn't get executed or if any parameters were wrong, e.g. wrong SL. We log each stage of processing the signal from signal receive -> parse of signal details and sending to EA -> return message from EA of outcome. There is also logging on the EA concerning what was received and further details of any issues. Such logging can be accessed via the Experts tab of the Toolbox/Terminal frame in MetaTrader, where there is a right-click View menu option that allows you to search for the symbol and time/date. The log is human read-able, but feel free to copy and paste and send us any lines you are unsure about.

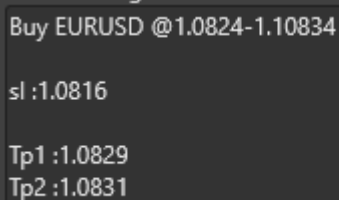
Note, at the bottom of the log you can see the Details in full for the selected row of the log. There is also a splitter window control, so can make that details box bigger, if click and drag on that.

To determine why signals not being processed correctly it is best to focus on a specific example. Usually when fix that then will often address other occurrences.

Here are the key log entries for each stage of processing a signal:

### 1) Signal Received from Source

The first entry you will see in the log is the incoming signal from the signal source. Best to look at the Details box shown below the log when you click on the entry row of the log. Here you'll see the raw text that we received, e.g.:



```
Buy EURUSD @1.0824-1.10834  
sl :1.0816  
Tp1 :1.0829  
Tp2 :1.0831
```

Check that this text matches the alert what was sent from the signal source. For example, in the case of Telegram alerts then check the text matches what is shown on your Telegram app. Look out for any issues with (say) international characters. It's going to be this text that we parse for the signal details, so focus & configure on what appears here rather than what is in the Telegram app. Of course, let us know if parsing is out whack and unsable and we'll see what we can do.

### 1b) Issue Finding Matching Signal Source Reference ID

If the system can't find a suitable Signal Refrenced ID that you configured via the Signal Souces sub-tab then this will then be reported in the log. This includes issues finding a suitable connected EA for the symbol mentioned in the signal text. For example, here an EA was not found for the symbol contained in the signal text:



02/04/2025 15:40:57	test	Unable to find EA for symbol in order to action signal
---------------------	------	--

Other issues may be where 'Text Required' or 'Text to Execlude' blocks a successful Signal Reference ID match. Any 'Other Signals Required' that were ticked could also

block successful match if same direction not yet received on the other signal sources.  
Tip: You can see what directions have been received in the Directions sub-tab.

If no matching Signal Source Reference ID was found then the signal will not be processed any further. This includes where Allowed Accounts didn't match any currently connect account.

## 2) Sending Parsed Details to EA

02/04/2025 15:15:12	test	EURUSD	Requesting EA to open and close opposite [AcctID=1246116599 AxiCor] Entry=1.09345, SL=1.0879, TPs=[1.0945 1.0953]
---------------------	------	--------	---

Here is you can see what the EA has been requested to do. Entry is the pending order entry price (if provided), else will be market order. Next is the SL price that has been parsed, again if requested. Finally, any parsed TP details are shown for each TP target , ordered with furthest away last. If these prices are incorrect or missing then check your Advanced setting – see section 7.9.1

Note, AcctID means account ID and indicates which account the signal was sent to.

## 3) Return Result from EA

02/04/2025 15:15:12	test	EURUSD	Signal exec FAILED on EA (dir=Buy, msg=Entry mode not set to trade) [Acct#=1246116599]
---------------------	------	--------	--

Here is what the EA reported back. In this example, execution (exec) of the signal failed. In brackets is the direction (buy or sell) and a message (msg) from the EA. 'Entry mode not set to trade' means Auto Entry Mode was not set to TC (trade continuous) in CONFIG | General Settings on the EA. Note, you can also enable Entry Mode on the panel for on-the-fly changes via CONFIG | Display | Panel Items on the EA. Note, Auto Entry Mode on the EA allows you to control whether trade signals are actually executed on the account. There are other modes such as ALT (alert), where it will just alert you that a trade signal has occurred.

For a successful signal execution then will see:

02/04/2025 15:26:32	test	EURUSD	Signal exec on EA success (dir=Buy, msg=Pend BUY set @1.09537 sl=1.0816,tp=1.0829,1.0831) [Acct#=1246116599]
---------------------	------	--------	--

Here the EA is reporting the pending buy order what set @ price 1.09537 and with SL and TP prices as shown. Again multiple TP targets are shown with target furthest away appearing last.

## 8 Main Menu of Windows App

The Windows version of our app has an additional main menu shown at the top off the application window. This section will explain what the menu options do.

### 8.1 File

#### 8.1.1 Open Data Folder

This opens the data folder where file get store that are used by the Window application. For example Config | Options storage.

#### 8.1.2 Save Desktop

Will save the current layout of the windows of the application, including pop-out charts including Trading View charts.

#### 8.1.3 Exit

Will exit the Windows application.

### 8.2 View

#### 8.2.1 TradingView Create

Will create a new pop-up window for additional TradingView charts. This can allow you to make use of a multi-monitor setup.

#### 8.2.2 Currency Map Create

Will create a new pop-up for viewing the output from our map element of our Currency Map & Strength indicator: <https://runwisefx.com/cms/> This indicator must be running on a MetaTrader chart running on the same machine for this to work.

#### 8.2.3 Currency Strength Create

Will create a new pop-up for viewing the output from our strength component of Currency Map & Strength indicator: <https://runwisefx.com/cms/> This indicator must be running on a MetaTrader chart running on the same machine for this to work.

### 8.3 Config

#### 8.3.1 Say Alert Verbally

This is a tick menu option, which can toggle of any alerts, show in the Alerts tab, should be readout.

#### 8.3.2 Options

Allow various options to be changed that relate to our Windows application.

The mostly likely option may need to set is Symbol Translate. This allows you handle where symbol used on TradingView (or other systems like Telegram) doesn't match MetaTrader. Here you can set sourceSymbol=destSymbol. For example, if DowJones on TradingView but US30 on MetaTrader then set to **DowJones=US30** Can comma separate if more than one pair. Can also add extra items if connecting to multiple MetaTrader brokers that use different symbols, e.g. if two MT accounts on

where one has US30 symbol and another US30.cash then add  
**DowJones=US30,DowJones=US30.cash**

Options related to Signals and Telegram and detailed in Signals section.

### **8.3.3 EA Configuration**

Allows the EA configuration to be edited for any connected EA and selected account. This is what can also be edited via the CONFIG button on the EA. The advantage using our Windows application for this is that it is not limited to the 64 character of edit boxes shown on MetaTrader charts. You can also get more visibility of when entries have been set on per symbol, period and/or trade index basis.

## **8.4 Tools**

### **8.4.1 Test**

It shouldn't be necessary for you to use this option unless requested by RunwiseFX support.

### **8.4.2 String/Number Combination Wizard**

Only necessary to use this when alerted by the EA when it asks you to visit <https://runwisefx.com/fix/> so that the EA can handle a string/number combination of indicator inputs that it is not seen before.

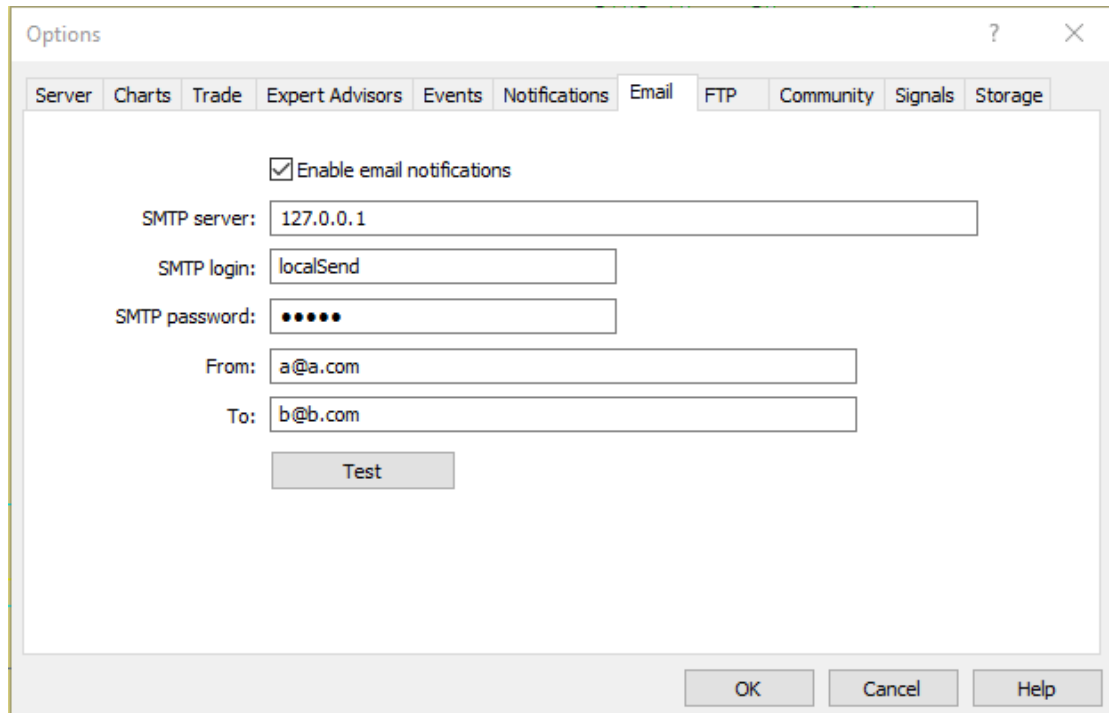
## 9 CONTACTS

Runwise Limited  
The Guild Hub  
High Street  
Bath  
BA1 5EB  
United Kingdom

Email: [support@runwisefx.com](mailto:support@runwisefx.com)  
Web: [www.runwisefx.com](http://www.runwisefx.com)

## APPENDIX A – Configuring MetaTrader to Send Email Alerts to RunwiseFX App

If you wish to use our RunwiseFX App signals functionality to respond and trade to alerts coming from indicators, sent via email, then you'll need to configure MetaTrader to send those emails locally to the RunwiseFX App. To do this, in MetaTrader, go to Tools | Options | Email tab and set up as follows, where password can be set to anything, e.g. local



The screenshot shows the 'Options' dialog box with the 'Email' tab selected. The 'Enable email notifications' checkbox is checked. The 'SMTP server' field is set to '127.0.0.1'. The 'SMTP login' field is set to 'localSend'. The 'SMTP password' field is masked with dots. The 'From' field is set to 'a@a.com' and the 'To' field is set to 'b@b.com'. There is a 'Test' button below the 'To' field. At the bottom of the dialog are 'OK', 'Cancel', and 'Help' buttons.

The contents of the boxes don't matter too much as long as not showing in red as that can prevent MetaTrader from sending the emails. The exception is the SMTP Server box, which needs to be set to **127.0.0.1** which means send locally to your computer.

★★★★★  
**top  
tip**

You can test you've set it up correctly via CONFIG | Tools on the EA and use the 'Send Email' button. Should see it appear in the log of the Signals tab. If doesn't work then try restarting our Windows app.

**END OF DOCUMENT**